

SHEET 2 OF 3

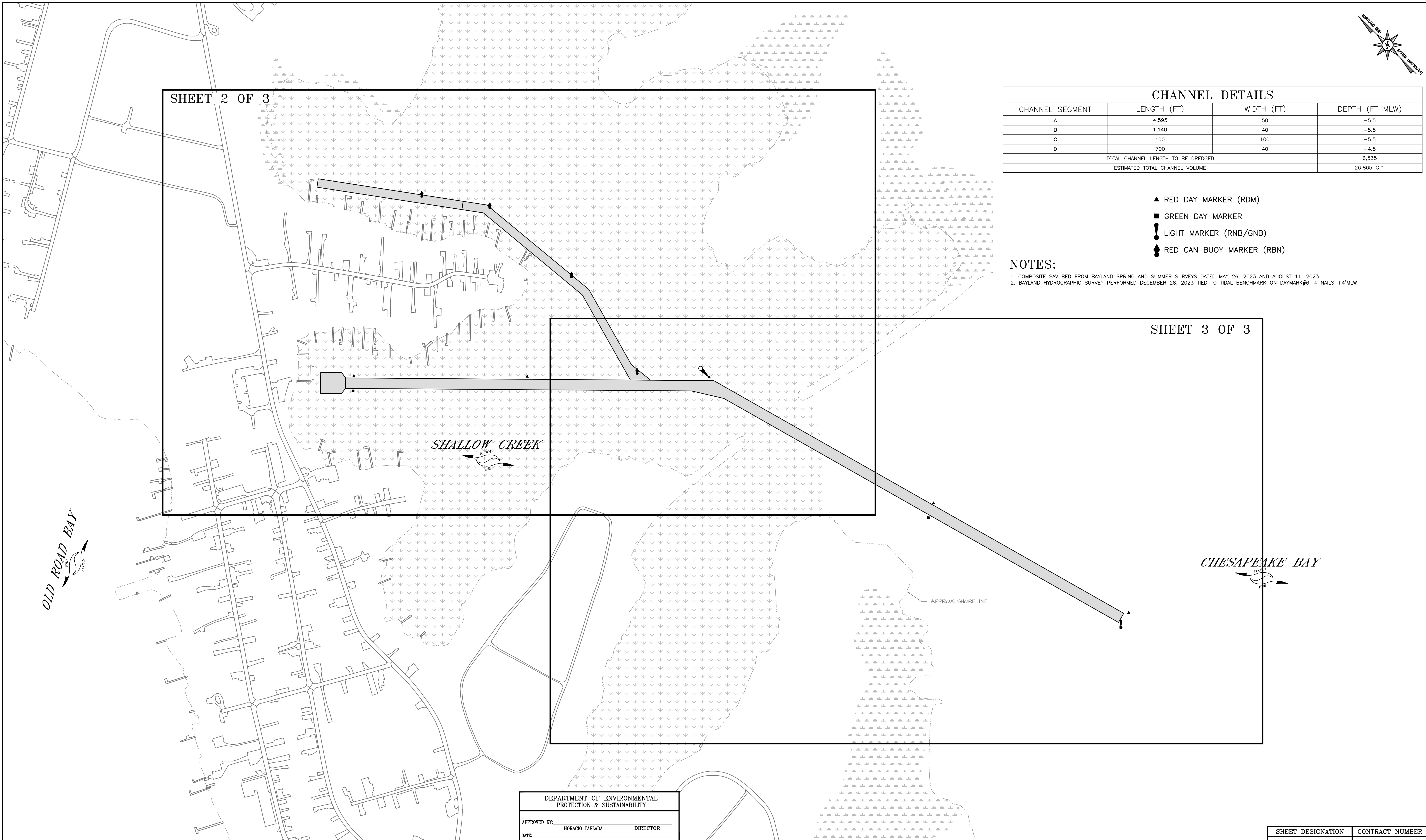
CHANNEL DETAILS			
CHANNEL SEGMENT	LENGTH (FT)	WIDTH (FT)	DEPTH (FT MLW)
A	4,595	50	-5.5
B	1,140	40	-5.5
C	100	100	-5.5
D	700	40	-4.5
TOTAL CHANNEL LENGTH TO BE DREDGED			6,535
ESTIMATED TOTAL CHANNEL VOLUME			26,865 C.Y.

- ▲ RED DAY MARKER (RDM)
- GREEN DAY MARKER
- ! LIGHT MARKER (RNB/GNB)
- ◆ RED CAN BUOY MARKER (RBN)

NOTES:

1. COMPOSITE SAV BED FROM BAYLAND SPRING AND SUMMER SURVEYS DATED MAY 26, 2023 AND AUGUST 11, 2023
2. BAYLAND HYDROGRAPHIC SURVEY PERFORMED DECEMBER 28, 2023 TIED TO TIDAL BENCHMARK ON DAYMARK#6, 4 NAILS +4'MLW

SHEET 3 OF 3



DEPARTMENT OF ENVIRONMENTAL PROTECTION & SUSTAINABILITY
 APPROVED BY: HORACIO TABIADA DIRECTOR
 DATE: _____

PROFESSIONAL CERTIFICATION		AS-BUILT / REVISION	BY	DATE	P.W.A. NO.	KEY SHEET	POSITION	SHT	DRAWING SCALE	DEPARTMENT OF PUBLIC WORKS
I HEREBY CERTIFY THAT THESE DOCUMENTS WERE PREPARED OR APPROVED BY ME, AND THAT I AM A DULY LICENSED PROFESSIONAL ENGINEER UNDER THE LAWS OF THE STATE OF MARYLAND. LICENSE NO. _____ EXPIRATION DATE _____									PLAN SCALE: _____	APPROVED BY: _____ DIRECTOR
									PROFILE SCALE: _____	DATE: _____
ENGINEER: BAYLAND CONSULTANTS & DESIGNERS, INC HANOVER, MD	DGN BY: _____	BUREAU OF ENGINEERING AND CONSTRUCTION	BUILDINGS	HIGHWAYS	STRUCTURES	STORM DRAINS	SEWER	WATER	FIELD ENGINEER	BUR. OF ENGINEERING & CONSTRUCTION
AS-BUILT PER RECORD PRINT	DWN BY: _____	REVIEWED BY: _____								APPROVED BY: _____ CHIEF
BY: _____	CHKD BY: _____	DATE REVIEWED: _____								DATE: _____

BALTIMORE COUNTY DEPARTMENT OF ENVIRONMENTAL PROTECTION AND SUSTAINABILITY
 SHALLOW CREEK MAINTENANCE DREDGING

SHEET DESIGNATION	CONTRACT NUMBER
	JOB ORDER NUMBER
	SHEET 1 OF 3
	DRAWING NUMBER
	FILE NO.:

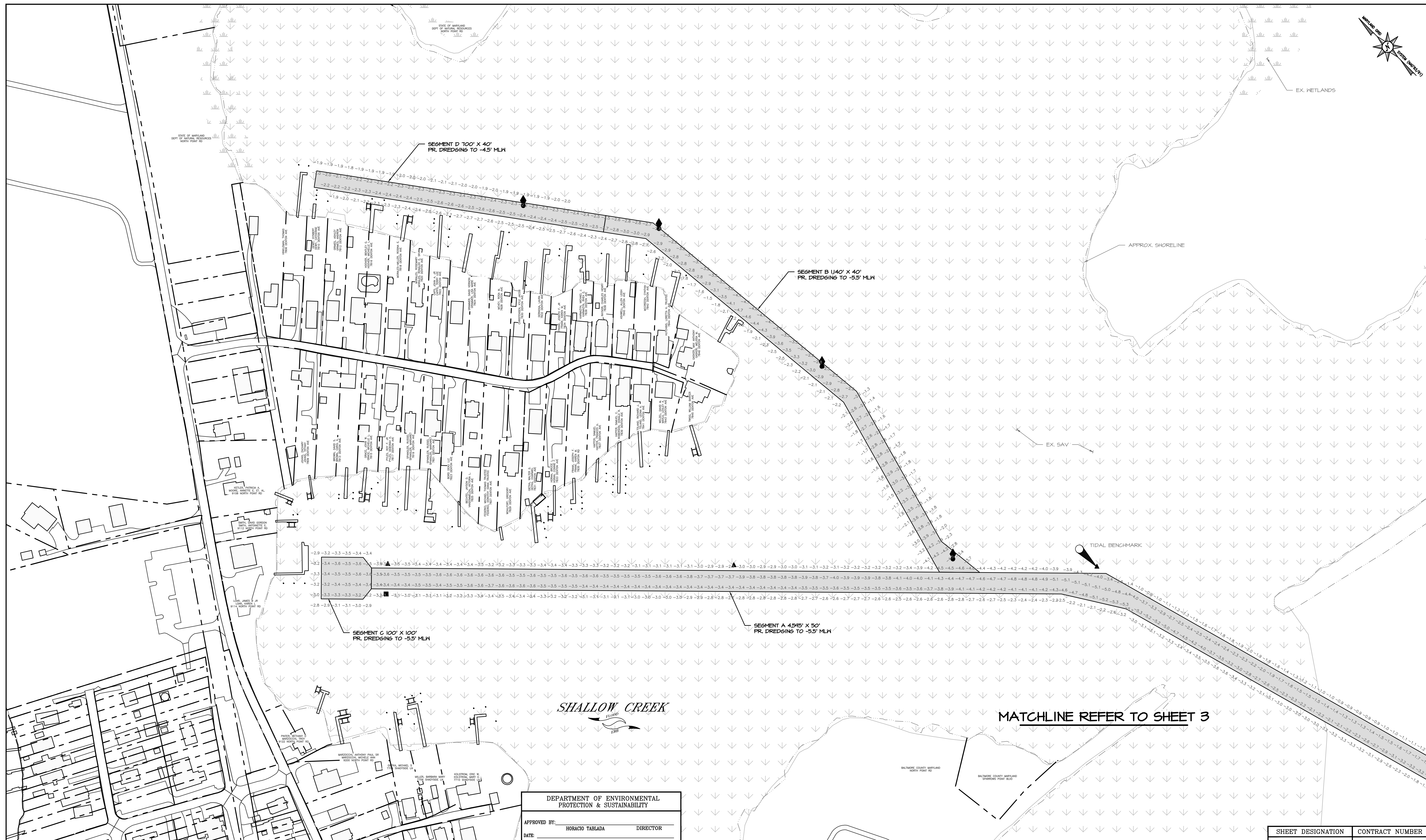
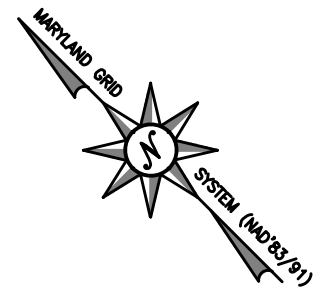


COUNCILMANIC DISTRICT: 7

BALTIMORE COUNTY, MARYLAND

ELECTION DIST. NO.: 15

DWG: FILENAME: 24-3-2803-SHALLOW-CREEK-MAINT-DREDGING-CAD-Plan-Sheet-File2-2803-Key



MATCHLINE REFER TO SHEET 3

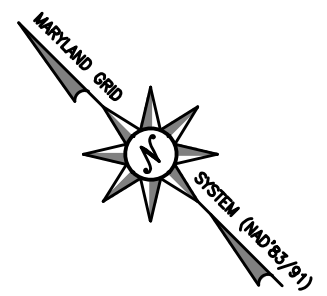
DEPARTMENT OF ENVIRONMENTAL PROTECTION & SUSTAINABILITY
 APPROVED BY: HORACIO TABIADA DIRECTOR
 DATE:

PROFESSIONAL CERTIFICATION I HEREBY CERTIFY THAT THESE DOCUMENTS WERE PREPARED OR APPROVED BY ME, AND THAT I AM A DULY LICENSED PROFESSIONAL ENGINEER UNDER THE LAWS OF THE STATE OF MARYLAND. LICENSE NO. _____ EXPIRATION DATE _____ ENGINEER: BAYLAND CONSULTANTS & DESIGNERS, INC HANOVER, MD AS-BUILT PER RECORD PRINT BY: _____ DATE: _____ CHD BY: _____ DATE REVIEWED: _____	AS-BUILT / REVISION	BY	DATE	P.W.A. NO.	KEY SHEET POSITION	SHT	DRAWING SCALE	DEPARTMENT OF PUBLIC WORKS
	BUREAU OF ENGINEERING AND CONSTRUCTION	BUILDINGS	HIGHWAYS	STRUCTURES	STORM DRAINS	SEWER	WATER	FIELD ENGINEER
								BUR. OF ENGINEERING & CONSTRUCTION
								APPROVED BY: _____ CHIEF
								DATE: _____

BALTIMORE COUNTY DEPARTMENT OF ENVIRONMENTAL PROTECTION AND SUSTAINABILITY		SHEET DESIGNATION	CONTRACT NUMBER
SHALLOW CREEK MAINTENANCE DREDGING			
COUNCILMANIC DISTRICT: 7			
BALTIMORE COUNTY, MARYLAND			
ELECTION DIST. NO.: 15			
		JOB ORDER NUMBER	
		SHEET 2 OF 3	
		DRAWING NUMBER	
		FILE NO.:	



DWG: FILENAME: 23-2803-SHALLOW-CREEK-MAINT-DREDGING-CAD (Plan Sheet) (Sheet 2) (2023) (SPO)



PROFESSIONAL CERTIFICATION I HEREBY CERTIFY THAT THESE DOCUMENTS WERE PREPARED OR APPROVED BY ME, AND THAT I AM A DULY LICENSED PROFESSIONAL ENGINEER UNDER THE LAWS OF THE STATE OF MARYLAND. LICENSE NO. _____ EXPIRATION DATE _____		AS-BUILT / REVISION _____		BY DATE _____		P.W.A. NO. _____		KEY SHEET POSITION SHT _____		DRAWING SCALE PLAN SCALE: _____ PROFILE SCALE: _____		DEPARTMENT OF PUBLIC WORKS APPROVED BY: _____ DIRECTOR DATE: _____							
ENGINEER: BAYLAND CONSULTANTS & DESIGNERS, INC HANOVER, MD AS-BUILT PER RECORD PRINT		DGN BY: _____ DWN BY: _____ CHKD BY: _____		BUREAU OF ENGINEERING AND CONSTRUCTION REVIEWED BY: _____ DATE REVIEWED: _____		BUILDINGS _____		HIGHWAYS _____		STRUCTURES _____		STORM DRAINS _____		SEWER _____		WATER _____		FIELD ENGINEER BUR. OF ENGINEERING & CONSTRUCTION APPROVED BY: _____ CHIEF DATE: _____	

DEPARTMENT OF ENVIRONMENTAL PROTECTION & SUSTAINABILITY
 APPROVED BY: HORACIO TABIADA DIRECTOR
 DATE: _____

BALTIMORE COUNTY DEPARTMENT OF ENVIRONMENTAL PROTECTION AND SUSTAINABILITY
 SHALLOW CREEK MAINTENANCE DREDGING

COUNCILMANIC DISTRICT: 7 BALTIMORE COUNTY, MARYLAND ELECTION DIST. NO.: 15

SHEET DESIGNATION	CONTRACT NUMBER
JOB ORDER NUMBER	SHEET 3 OF 3
DRAWING NUMBER	FILE NO.:

D:\G\PROJECTS\2013\2803_SHALLOW_CREEK_MAINT_DREDGING\CAD\Plan_Sheet_The2_2803_SPC